



Úřad práce ČR

Labour market in Czechia



Úřad práce ČR

The situation on czech labour market in general I

Unemployment rate in Czechia (EUROSTAT) : **2,2%**

Unemployment rate in Czechia (czech statistic): **2,6%**

Total number of unemployed people: **200.675**

Total number of job offers in Czechia: **346.552**

Unemployment rate in Liberec region: **2,8%**

Unemployment rate in Hradec Králové region : **1,9%**

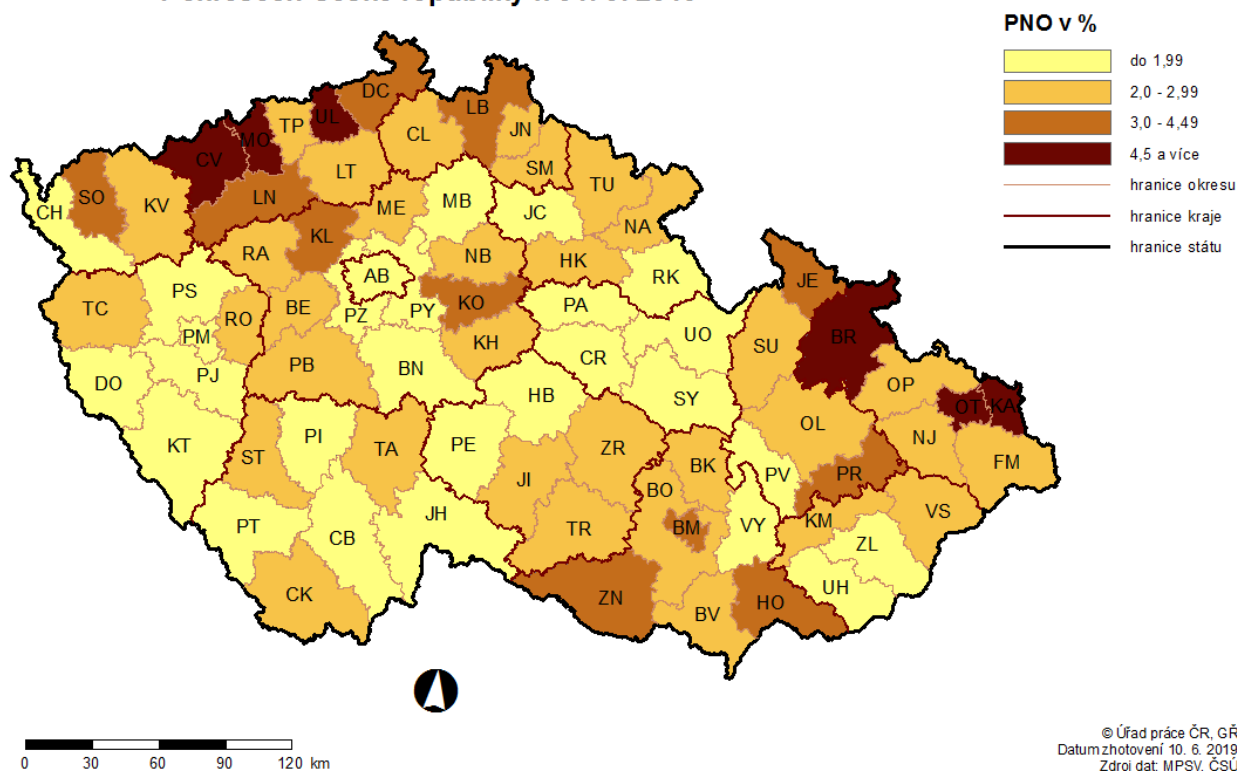
Unemployment rate in Pardubice region : **1,7%**



Úřad práce ČR

The situation on czech labour market in general II – unemployment in districts

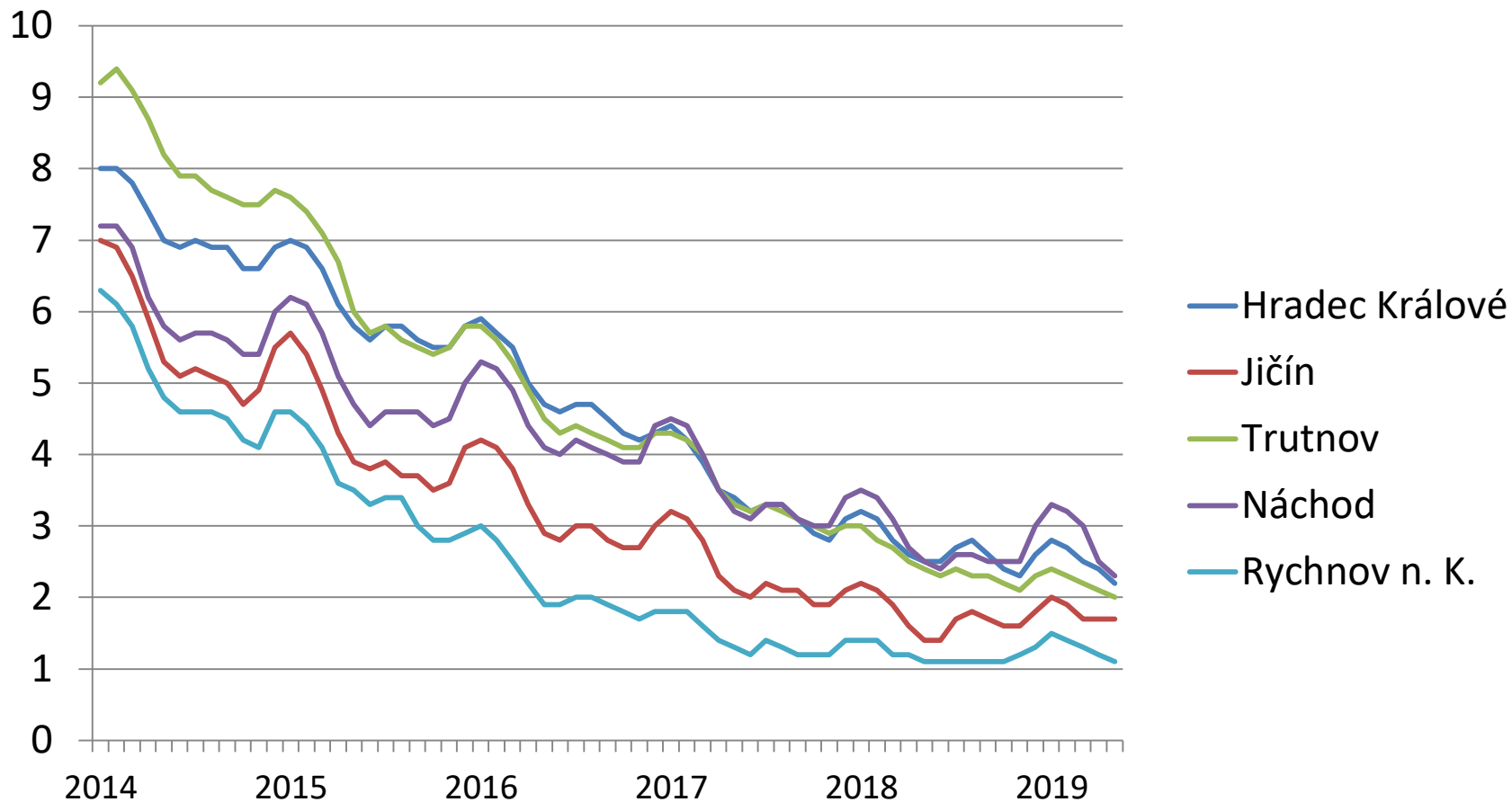
PODÍL NEZAMĚSTNANÝCH OSOB (PNO) NA POČTU OBYVATEL
v okresech České republiky k 31. 5. 2019





Úřad práce ČR

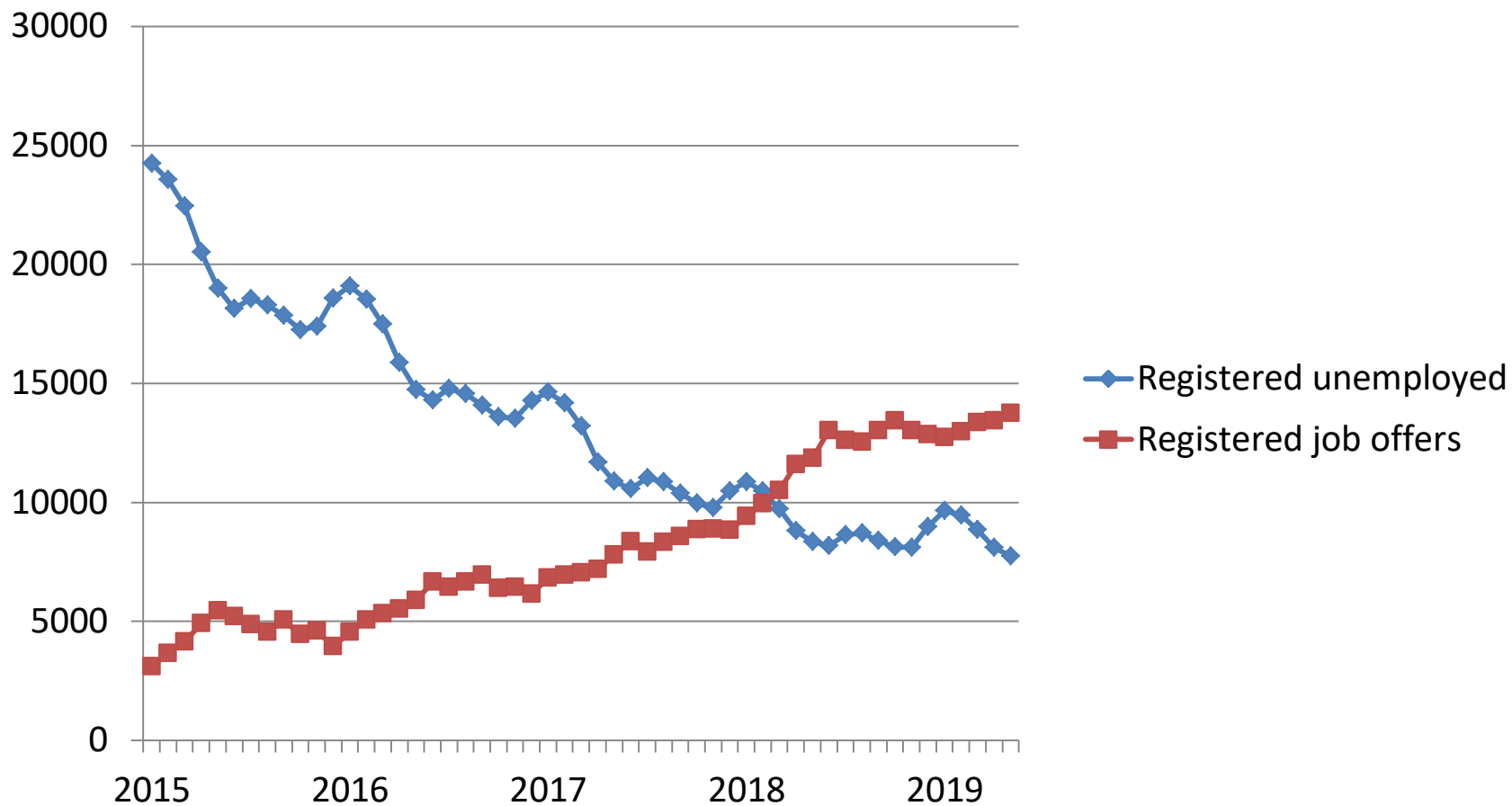
Development of unemployment in districts of HK region (%)





Úřad práce ČR

Development of number of unemployed and job offers





Úřad práce ČR

Labour market characteristic

- Extremely low unemployment
- High number of job offers
- Average salary/wage is growing
- Required positions: drivers, workers for factories, technicians, cooks, waiters, seasonal workers
- Differences between districts and areas. Still low mobility
- Growing number of foreign workers



Úřad práce ČR

Registered unemployed people

- Mostly with basic or low education degree (cca $\frac{3}{4}$)
- Growing number/share of elder people
- Low number of young people and graduate
- 70% od unemployed are registered of short period (less than 3 months)
- Share of long-unemployed is only 20% and still going down



Our support for employers

Úřad práce ČR

- Publishing of job offers
- Matching = connecting suitable jobs and people
- Active employment policy – subsidy for creating new positions, subsidy on wage for new employee
- Retraining
- Project POVEZ II – education for employee
- Monitoring and labour market prediction
- Support for employers with disabled employee
- EURES



Úřad práce ČR

Foreigners on labour market in HK region

year	2014	2015	2016	2017	2018	Change 2018/2014
In total	8181	10300	14607	17777	21048	257%
EU + EEC	6579	8457	12016	13819	15460	235%
Other states (Ukraine, Vietnam, Mongolia)	1602	1843	2591	3958	5588	349%
Poland	2856	3350	5186	7329	8398	294%



Úřad práce ČR

Foreigners on labour market in HK region - districts

district	Number of foreigners	country*
Hradec Králové	4686	SVK (33,4 %), UKR (27,8 %), HUN (7,5 %), POL (7,5 %), ROU (4,2 %)
Jičín	2401	SVK (35,7 %), UKR (31,6 %), ROU (9,2 %), BLR (5,5 %), POL (3,7 %)
Náchod	4039	POL (58,3 %), SVK (11,5 %), UKR (10,7 %), ROU (4,9 %), HUN (4,3 %)
Rychnov nad Kněžnou	6590	POL (63,6 %), SVK (12,4 %), UKR (12,4 %), ROU (2,8 %), HUN (2 %)
Trutnov	3332	POL (42,7 %), SVK (23,3 %), UKR (15,7 %), HUN (2,9 %), ROU (1,6 %)
together	21048	POL (39,9 %), SVK (21,3 %), UKR (18,2 %), ROU (4,1 %), HUN (4 %)

* SVK – Slovakia, UKR – Ukraine, HUN – Hungaria, POL – Poland, ROU – Romania, BLR – Belarus



How to employ foreigners

Úřad práce ČR

Information cards – from EU + EEC

Working permission:

- a) For no more than 6 months – seasonal workers
- b) For no more than 2 years, can be prolonged

Employee's cards – after labour market test,
can be obtained from ministry of the interior



Úřad práce ČR

The future in border regions

- Lower economical growth – unemployment will rise
- Dependence on car production, we'll have to diversify our industry
- Industry 4.0
- Concentration on services – big potential of tourism, e.g. in Broumov or Orlické hory
- Ageing process – decrease of working people and rise of social services need
- Communications – railway, highway to Poland
- People mobility – threat of depopulation of countryside and border regions



Úřad práce ČR

Thank you for your attention!

martin.horak@uradprace.cz